

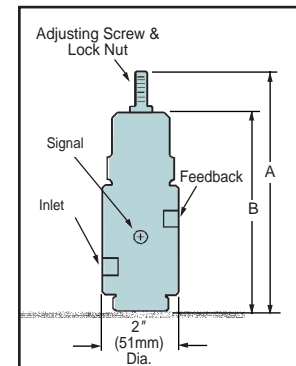
Pressure and/or Temperature Pilot Operated Steam Regulators (continued)

Series SSP Spring Pressure Control Pilots

The Series SSP Spring pilot valves are designed for applications such as steam to hydronic converters, domestic hot water, manufacturing process, or

others that require constant outlet pressure. The Series SSP can also be used in conjunction with a series STPA Temperature pilot as a pressure limiter.

- Lightweight, compact size prevents strain on mounting pipes
- Enclosed spring prevents dirt from entering diaphragm
- Tight shut-off provided by hardened stainless steel pin and seat
- Packless construction eliminates seals that wear out and leak
- Travel stop and cover on diaphragm helps prevent over pressurization damage
- Removable strainer helps prevent debris from entering pilot
- Maximum temperature 450°F (232°C)
- Maximum operating pressure 250 psig (17.3 bar)



Materials of Construction	
Part	Specifications
Body	Steel ASTM A108
Pin	Stainless Steel ASTM A581
Seat	Stainless Steel ASTM A582
Diaphragm Buttons	Stainless Steel ASTM A582
Spring	Stainless Steel ASTM A313
Strainer	Stainless Steel ASTM A240
Diaphragm	Beryllium Copper ASTM B194
Gaskets	Copper ASTM B152

Dimensions in. (mm)

Model	A	B
SSP-12	7¼ (184)	6¾ (157)
SSP-50	7¼ (184)	6¾ (157)
SSP-225	7¼ (184)	6¾ (157)

Ordering Information

Spring Pilots

Model Number	Part Number	Outlet Pressure Range psig (bar)	Maximum Pressure psig (bar)	Weight (Approx.) lbs. (kg)
SSP-12*	400559	½ - 12(.034-.83)	30 (2.1)	4 (1.8)
SSP-50	400553	2 - 50 (.14-3.5)	250 (17.3)	4 (1.8)
SSP-225	400554	40 - 225(2.8-15.5)	250 (17.3)	5 (2.3)

* Only use with Model 2150 or 2250 low pressure main valves

Note: When Spring pilots are used with Safety Relief valves, the Safety Relief valve must be at least 5 psi (.35 bar) higher than the desired steam operating pressure.