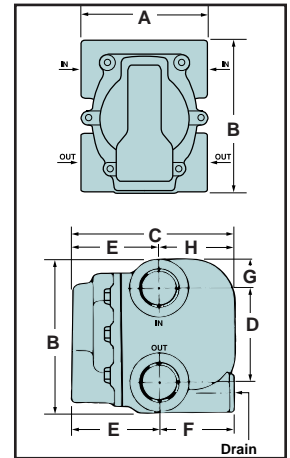
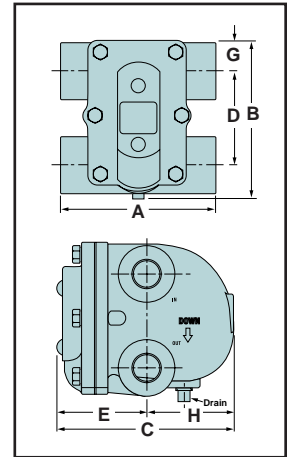


## Float and Thermostatic Steam Traps

### Series H BEARTRAP®

- Models ¾" - 2" (20 - 50mm) feature Universal 4 - port tappings, (2 inlets, 2 outlets) that provide versatility to allow easy piping and system monitoring
- Sizes available:
  - ¾" (20mm) NPT
  - 1" (25mm) NPT
  - 1¼" (32mm) NPT
  - 1½" (40mm) NPT
  - 2" (50mm) NPT
- Stainless steel internal components
- Resistant to water hammer and corrosion
- Below condensate level seat design prevents steam leakage
- Rugged thermostatic element eliminates air binding
- Maximum body design pressure
  - 250 psig (17.3 bar) ¾" - 1¼" (20 - 32mm)
  - 175 psig (12.1 bar) 1½" - 2" (40 - 50mm)
- Maximum operating pressure
  - 175 psig (12.1 bar) ¾" - 2" (20 - 50mm)
- Maximum temperature
  - 406°F (208°C) ¾" - 1¼" (20 - 32mm)
  - 377°F (192°C) 1½" - 2" (40 - 50mm)



Materials of Construction	
Part	Specifications
Body and cover	Cast Iron 30,000 psi tensile
Valve Pin and Seat	Stainless Steel (Hardened)
Float	Stainless Steel
Lever Assembly	Stainless Steel
Thermostatic Air Vent	Stainless Steel Cage and Thermal Element
Cover Bolts	Grade 5

### Dimensions in. (mm)

NPT Size in. (mm)	A	B	C	D	E	F	G	H
¾ (20)	5½ (140)	5 <sup>19</sup> / <sub>32</sub> (142)	6¼ (159)	3 <sup>5</sup> / <sub>16</sub> (84)	3 <sup>5</sup> / <sub>32</sub> (80)	—	1 <sup>5</sup> / <sub>64</sub> (27)	3 <sup>1</sup> / <sub>16</sub> (78)
1 (25)	5½ (140)	5 <sup>19</sup> / <sub>32</sub> (142)	6¼ (159)	3 <sup>5</sup> / <sub>16</sub> (84)	3 <sup>5</sup> / <sub>32</sub> (80)	—	1 <sup>5</sup> / <sub>64</sub> (27)	3 <sup>1</sup> / <sub>16</sub> (78)
1¼ (32)	5½ (140)	5 <sup>19</sup> / <sub>32</sub> (142)	6¼ (159)	3 (76)	3 <sup>5</sup> / <sub>32</sub> (80)	—	1 <sup>5</sup> / <sub>64</sub> (27)	3 <sup>1</sup> / <sub>16</sub> (78)
1½ (40)	6 <sup>3</sup> / <sub>8</sub> (162)	7 <sup>11</sup> / <sub>16</sub> (195)	8 <sup>7</sup> / <sub>32</sub> (209)	5¼ (133)	4 <sup>13</sup> / <sub>32</sub> (112)	3 <sup>13</sup> / <sub>16</sub> (97)	1 <sup>11</sup> / <sub>32</sub> (34)	3 <sup>13</sup> / <sub>16</sub> (97)
2 (50)	6 (152)	11 (279)	9 <sup>5</sup> / <sub>32</sub> (233)	7 <sup>15</sup> / <sub>32</sub> (190)	4 <sup>17</sup> / <sub>32</sub> (115)	4 <sup>7</sup> / <sub>32</sub> (107)	1 <sup>5</sup> / <sub>8</sub> (41)	4 <sup>5</sup> / <sub>8</sub> (117)

## Float and Thermostatic Steam Traps (continued)

### Series H BEAR TRAP® (continued)

- Determine the differential pressure across the trap (inlet pressure - outlet pressure). On applications where the steam is controlled by a modulating temperature regulator, the trap differential should be 1/2 psi (0.34 bar).
- Determine the capacity based on the differential pressure and the required capacity of the trap to open against the maximum inlet steam pressure.
- Apply a Safety Factor by multiplying required capacity by 1.5.

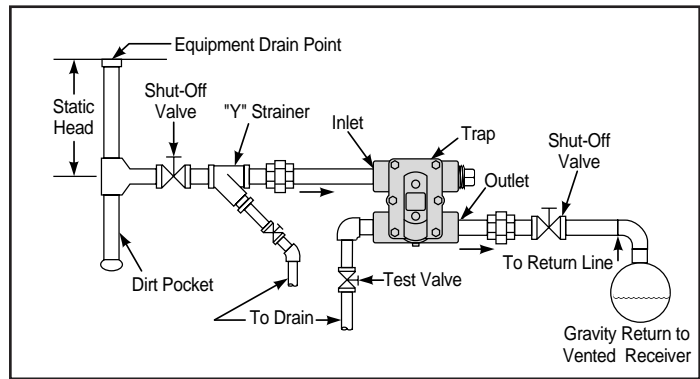
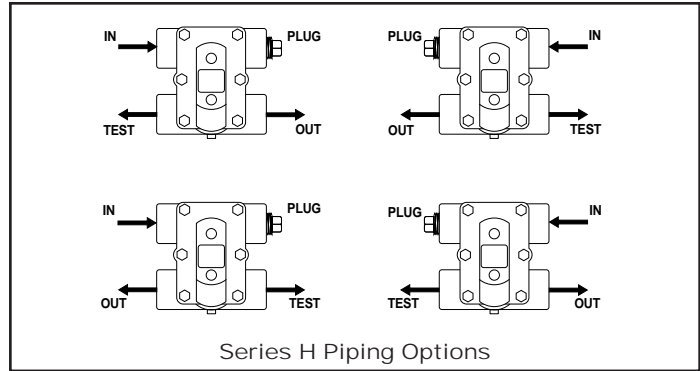
### Capacities (Gross Ratings)

Model	NPT Size in. (mm)	Orifice Size in. (mm)	Pressure Differential in Pounds Per Square Inch (bar)																	
			1/4 (0.017)	1/2 (0.035)	1 (0.07)	2 (0.14)	5 (0.35)	10 (0.69)	15 (1.0)	20 (1.4)	25 (1.69)	30 (2.1)	40 (2.8)	50 (3.5)	60 (4.2)	75 (5.2)	100 (6.9)	125 (8.6)	150 (10.4)	175 (12.1)
			Capacities in Pounds of Condensate Per Hour (kg/hr.)																	
FT015H	3/4 (20)	.253 (6.4)	390 (177)	500 (227)	680 (308)	910 (413)	1100 (500)	1450 (658)	1600 (725)											
FT015H	1 (25)	.253 (6.4)	390 (177)	500 (227)	680 (308)	910 (413)	1100 (500)	1450 (658)	1600 (725)											
FT015H	1 1/4 (32)	.312 (8)	600 (272)	770 (350)	980 (444)	1240 (562)	1640 (744)	2000 (907)	2340 (1062)											
FT015H	1 1/2 (40)	.500 (13)	1280 (581)	1700 (771)	2050 (2050)	2550 (1157)	3500 (1588)	4400 (1996)	5300 (2404)											
FT015H	2 (50)	.687 (17)	2500 (1134)	3150 (1429)	4000 (1814)	5000 (2268)	6800 (3084)	8300 (3765)	9800 (4405)											
FT030H	3/4 (20)	.235 (6)	380 (172)	470 (214)	630 (285)	870 (395)	1050 (475)	1380 (625)	1530 (695)	1700 (770)	1820 (825)	1900 (860)								
FT030H	1 (25)	.235 (6)	380 (172)	470 (214)	630 (285)	870 (395)	1050 (475)	1380 (625)	1530 (695)	1700 (770)	1820 (825)	1900 (860)								
FT030H	1 1/4 (32)	.253 (6.4)	420 (190)	550 (250)	740 (335)	1000 (450)	1200 (545)	1550 (700)	1760 (800)	1850 (840)	2000 (907)	2200 (1000)								
FT030H	1 1/2 (40)	.438 (11)	580 (263)	800 (362)	1200 (544)	1680 (762)	2600 (1179)	3500 (1387)	4500 (2041)	5200 (2358)	5700 (2585)	6100 (2766)								
FT075H	3/4 (20)	.166 (4.2)	160 (72)	210 (95)	280 (125)	360 (165)	520 (235)	700 (320)	800 (360)	870 (395)	930 (420)	970 (440)	1120 (510)	1230 (560)	1300 (590)	1450 (658)				
FT075H	1 (25)	.166 (4.2)	160 (72)	210 (95)	280 (125)	360 (165)	520 (235)	700 (320)	800 (360)	870 (395)	930 (420)	970 (440)	1120 (510)	1230 (560)	1300 (590)	1450 (658)				
FT125H	3/4 (20)	.125 (3.2)	100 (45)	130 (60)	170 (77)	230 (104)	330 (150)	410 (186)	500 (225)	560 (255)	620 (280)	660 (300)	750 (340)	830 (375)	890 (400)	970 (440)	1100 (500)	1190 (540)		
FT125H	1 (25)	.125 (3.2)	100 (45)	130 (60)	170 (77)	230 (104)	330 (150)	410 (186)	500 (225)	560 (255)	620 (280)	660 (300)	750 (340)	830 (375)	890 (400)	970 (440)	1100 (500)	1190 (540)		
FT175H	3/4 (20)	.106 (2.7)	70 (32)	80 (36)	110 (50)	140 (63)	220 (100)	280 (127)	340 (155)	380 (172)	400 (180)	420 (190)	460 (210)	480 (220)	520 (235)	580 (263)	690 (315)	850 (385)	960 (435)	1000 (454)
FT175H	1 (25)	.106 (2.7)	70 (32)	80 (36)	110 (50)	140 (63)	220 (100)	280 (127)	340 (155)	380 (172)	400 (180)	420 (190)	460 (210)	480 (220)	520 (235)	580 (263)	690 (315)	850 (385)	960 (435)	1000 (454)

## Series H additional inlet and outlet features

Models 3/4" - 2" (20 - 50mm)

- Allows positioning options for easy service
- Additional inlet provides a convenient location for vacuum breakers or separate external air vents. Vacuum breakers are required for systems with a modulating temperature regulating valve. External air vents are required when the trap discharges into a wet return line.
- Additional outlet provides a convenient location for a test valve, which eliminates the need for a costly trap test chamber and electronic monitors.



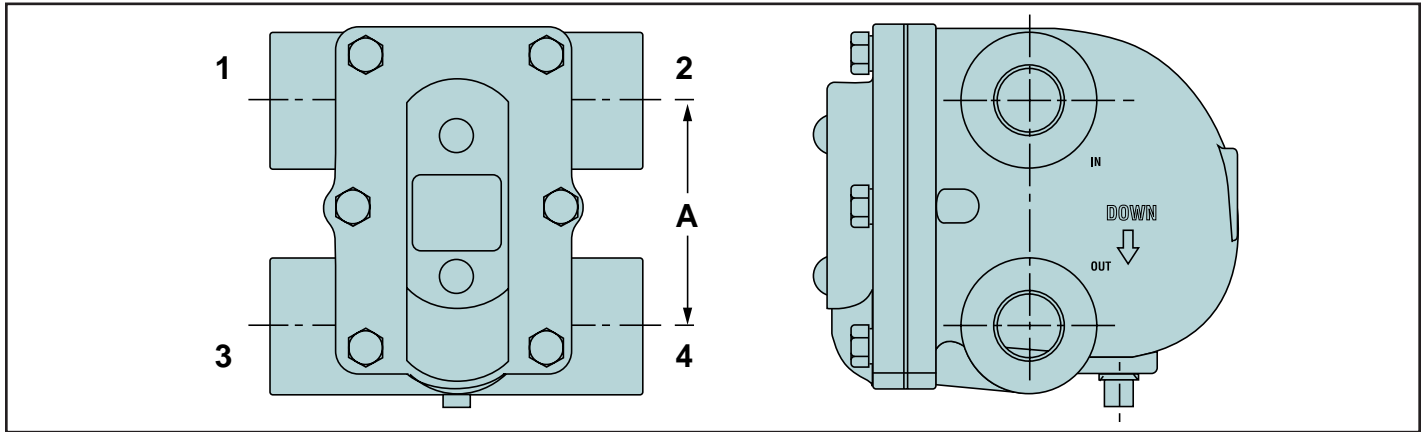
## Ordering Information

To convert previous Hoffman Specialty F & T Trap Model numbers, see page 17.

Model Number	Part Number	NPT Size in. (mm)	Seat Differential Pressure Rating psi (bar)	Housing Pressure Rating psi (bar)	Weight lbs. (kg)
FT015H	404200	3/4 (20)	15 (1.0)	250 (17.3)	11.7 (5.3)
FT015H	404210	1 (25)	15 (1.0)	250 (17.3)	11.7 (5.3)
FT015H	404220	1 1/4 (32)	15 (1.0)	250 (17.3)	11.7 (5.3)
FT015H	401626	1 1/2 (40)	15 (1.0)	175 (12.1)	22 (10)
FT015H	401629	2 (50)	15 (1.0)	175 (12.1)	38 (17)
FT030H	404202	3/4 (20)	30 (2.1)	250 (17.3)	11.7 (5.3)
FT030H	404212	1 (25)	30 (2.1)	250 (17.3)	11.7 (5.3)
FT030H	404222	1 1/4 (32)	30 (2.1)	250 (17.3)	11.7 (5.3)
FT030H	401638	1 1/2 (40)	30 (2.1)	175 (12.1)	22 (10)
FT075H	404204	3/4 (20)	75 (5.2)	250 (17.3)	11.7 (5.3)
FT075H	404214	1 (25)	75 (5.2)	250 (17.3)	11.7 (5.3)
FT125H	404206	3/4 (20)	125 (8.6)	250 (17.3)	11.7 (5.3)
FT125H	404216	1 (25)	125 (8.6)	250 (17.3)	11.7 (5.3)
FT175H	404208	3/4 (20)	175 (12.1)	250 (17.3)	11.7 (5.3)
FT175H	404218	1 (25)	175 (12.1)	250 (17.3)	11.7 (5.3)

## Float and Thermostatic Steam Traps (continued)

### Series H Competitive Dimensional Comparison of Distance Between Inlet and Outlet Pipes



#### Dimensions in. (mm)

Size	Manufacturer	Port Tappings				A in. (mm)
		1	2	3	4	
3/4" and 1" (20 & 25mm)	Hoffman FT015H	Yes	Yes	Yes	Yes	3 <sup>5</sup> / <sub>16</sub> (83)
	Hoffman 55	Yes	Yes	Yes	Yes	3 <sup>1</sup> / <sub>8</sub> (78)
	Spirax FT015	No	Yes	No	Yes	3 <sup>5</sup> / <sub>16</sub> (83)
	Armstrong 15-B3 & 15-B4	Yes	Yes	No	Yes	3 (76)
	Dunham Bush 40-215 & 40-415	No	Yes	No	Yes	3 <sup>7</sup> / <sub>16</sub> (86)
	Dunham Bush 44-215 & 44-415	Yes	Yes	Yes	Yes	3 <sup>7</sup> / <sub>16</sub> (86)

Size	Manufacturer	Port Tappings				A in. (mm)
		1	2	3	4	
1 1/4" (32mm)	Hoffman FT015H	Yes	Yes	Yes	Yes	3 (76)
	Hoffman 55	Yes	Yes	Yes	Yes	4 <sup>1</sup> / <sub>8</sub> (104)
	Spirax FT015	No	Yes	No	Yes	3 (76)
	Armstrong 15-B5	Yes	Yes	No	Yes	3 (76)
	Dunham Bush 40-515	No	Yes	No	Yes	3 (76)
	Dunham Bush 44-515	Yes	Yes	Yes	Yes	3 (76)

Size	Manufacturer	Port Tappings				A in. (mm)
		1	2	3	4	
1 1/2" (40mm)	Hoffman FT015H	Yes	Yes	Yes	Yes	5 <sup>1</sup> / <sub>4</sub> (133)
	Hoffman 55	Yes	Yes	Yes	Yes	5 <sup>1</sup> / <sub>4</sub> (133)
	Armstrong 15-B6	Yes	Yes	No	Yes	4 <sup>3</sup> / <sub>16</sub> (106)
	Dunham Bush 40-715	No	Yes	No	Yes	3 (76)
	Dunham Bush 44-715	Yes	Yes	Yes	Yes	3 (76)

Size	Manufacturer	Port Tappings				A in. (mm)
		1	2	3	4	
2" (50mm)	Hoffman FT015H	Yes	Yes	Yes	Yes	7 <sup>15</sup> / <sub>32</sub> (190)
	Hoffman 55	Yes	Yes	Yes	Yes	7 <sup>15</sup> / <sub>32</sub> (190)
	Armstrong 15-B8	Yes	Yes	No	Yes	6 (152)