

The Model 3208-V is designed to be used in conjunction with the 3200 / 3201 Liquid Level Controller, in applications where internal obstructions prevent direct installation of the level control, or to isolate the level control from fluid turbulence within the vessel.

Features:

- Rotatable Head Design
- Available with threaded or flanged controller and vessel connections.
- NACE MR-01-75 compliance option is available upon request.

Specifications:

Level Controller Connection

2", Threaded (FNPT) or Flanged

Vessel Connection Size

1", 1½ or 2"

Vessel Connection Style / Pressure Rating¹

| | |
|-------------------|---------------------|
| • Threaded (FNPT) | 1480 psig (102 bar) |
| • Socket Weld | 1480 psig (102 bar) |
| • Butt Weld | 1480 psig (102 bar) |
| • 150# RF | 275 psig (19 bar) |
| • 300# RF | 740 psig (51 bar) |
| • 600# RF | 1480 psig (102 bar) |
| • 600# RTJ | 1480 psig (102 bar) |
| • 900# RF | 2220 psig (152 bar) |
| • 900# RTJ | 2220 psig (152 bar) |
| • 1500# RF | 3750 psig (259 bar) |
| • 1500# RTJ | 3750 psig (259 bar) |
| • 2500# RF | 6170 psig (426 bar) |
| • 2500# RTJ | 6170 psig (426 bar) |



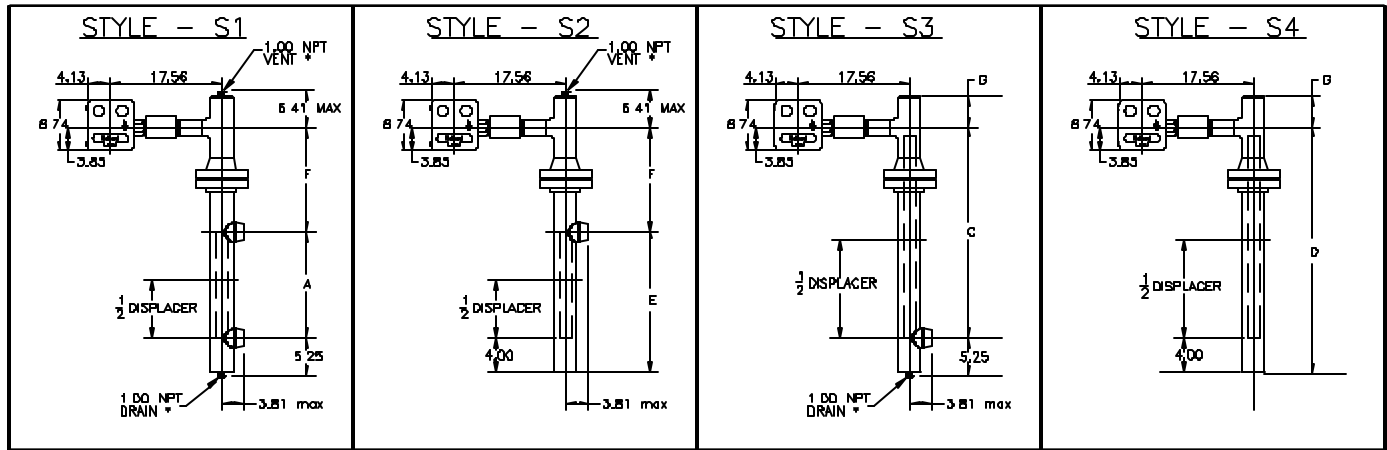
Materials of Construction²

| | |
|-------------------|--|
| Chamber and Dome: | Carbon Steel or 316 SST |
| Studs: | ASTM A193-B7 ASTM A193-B8M (Optional) |
| Nuts: | ASTM A194-2H ASTM A193-8M (Optional) |
| Gasket: | 316 / Grf C.S. Gr. Inc. / Grf 316SST Gr. (Optional) |

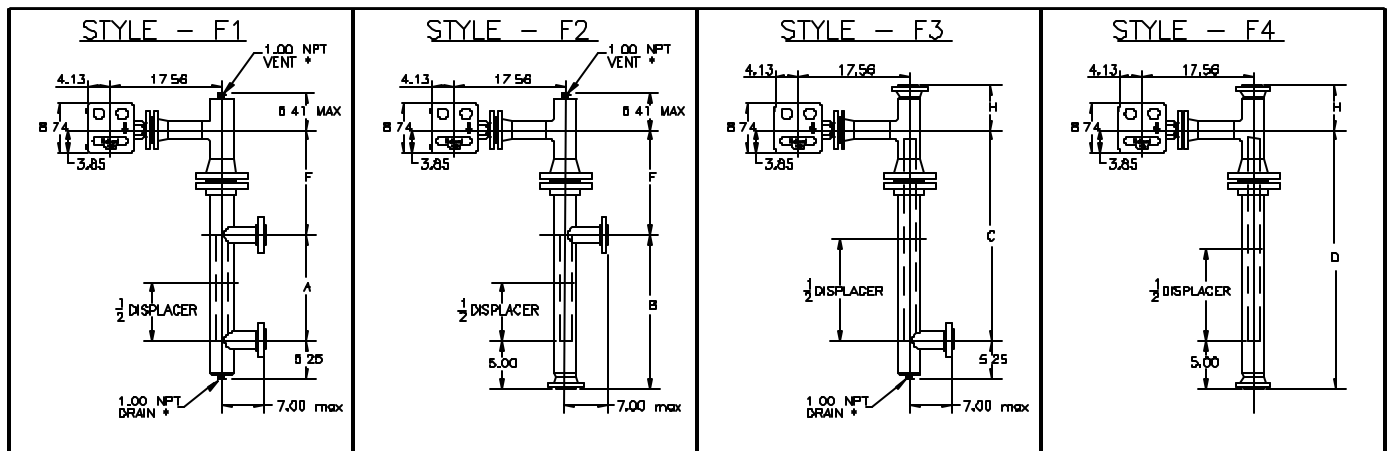
1. Maximum pressure ratings @ 100°F (38°C).
2. Materials certified to meet NACE MR-01-75 specifications are available upon request.



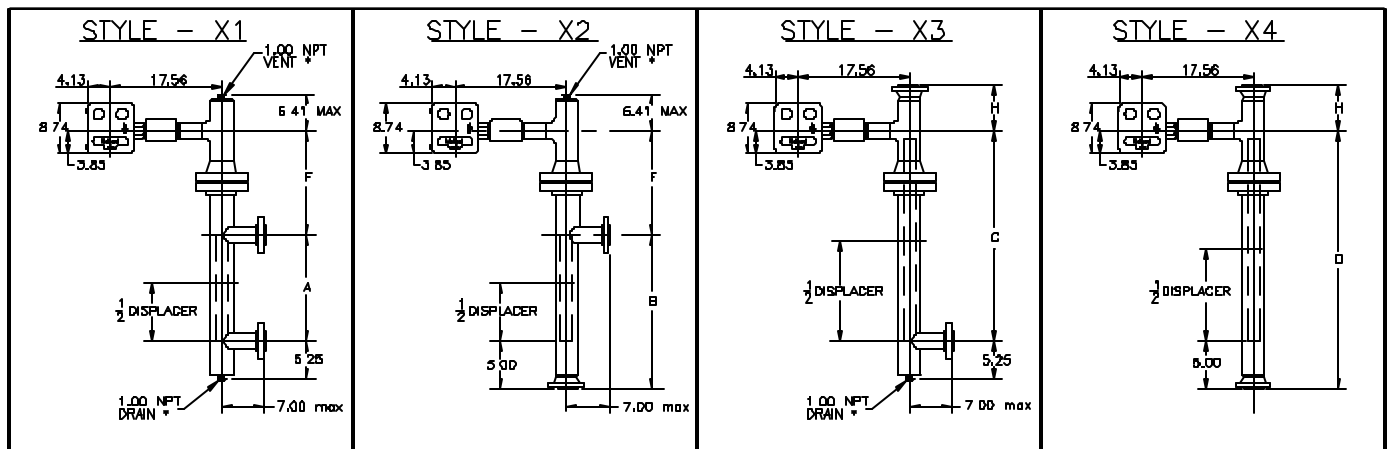
Dimensions – Threaded Controller Connection / Threaded Vessel Connections



Dimensions – Flanged Controller Connection / Flanged Vessel Connections



Dimensions – Threaded Controller Connection / Flanged Vessel Connections (Hybrid)



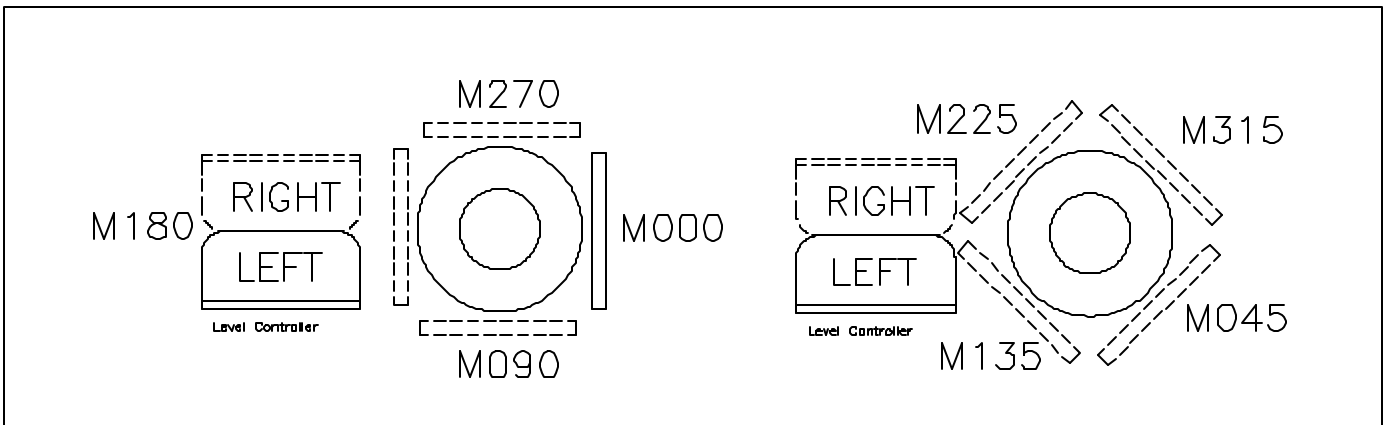
* Vent / Drain Plug(s) Included

Dimensions

| Dim | Style | Displacer Length | Inches |
|----------|------------|------------------|--------|
| A | S1, F1, X1 | 14 | 14 |
| | | 32 | 32 |
| B | F2, X2 | 14 | 19 |
| | | 32 | 37 |
| C | S3, F3, X3 | 14 | 15 |
| | | 32 | 33 |
| D | S4, F4, X4 | 14 | 20 |
| | | 32 | 38 |
| E | S2 | 14 | 18 |
| | | 32 | 36 |

| Dim | Style | Chamber Size | Vessel Connection | | Inches |
|-----------|------------------------|--------------|-------------------|--------------------|--------|
| | | | Size | Rating | |
| F | S1, S2, F1, F2, X1, X2 | 3" | All | ANSI 150, 300, 600 | 14.25 |
| | | | All | ANSI 150, 300 | |
| | | 4" | All | ANSI 600 | 18 |
| G | S3, S4 | 3" | All | All | 4.91 |
| | | 4" | All | All | 5.72 |
| H' | F3, F4, X3, X4 | 3" | 1" | 150# RF | 7.1 |
| | | | | 300# RF | 7.35 |
| | | | | 600# RF | 7.6 |
| | | | 1½" | 150# RF | 7.35 |
| | | | | 300# RF | 7.6 |
| | | | | 600# RF | 7.91 |
| | | 2" | 150# RF | 7.41 | |
| | | | 300# RF | 7.66 | |
| | | | 600# RF | 8.04 | |
| | | 4" | 1" | 150# RF | 7.91 |
| | | | | 300# RF | 8.16 |
| | | | | 600# RF | 8.41 |
| | | | 1½" | 150# RF | 8.16 |
| | | | | 300# RF | 8.41 |
| | | | | 600# RF | 8.72 |
| | | 2" | 150# RF | 8.22 | |
| | | | 300# RF | 8.47 | |
| | | | 600# RF | 8.85 | |

- Dimensions for chambers with configurations not shown (i.e., flange rating above ANSI 600, RTJ flanged, etc.) are available upon request. Please consult factory or your local Mallard representative.



Model Number Information

Sample Model Number: 3208 - V3 S1 - 20 FS 5 - 14 M000

| CHAMBER SIZE | | CODE | | |
|-------------------------------|--------------------------------|-----------------------|-------------------------------|------|
| Vertical 3" | | V3 | | |
| Vertical 4" | | V4 | | |
| CHAMBER STYLE | CODE | CHAMBER STYLE | CODE | |
| Flg'd, Side / Side | F1 | Hybrid, Side / Side | X1 | |
| Flg'd, Side / Bottom | F2 | Hybrid, Side / Bottom | X2 | |
| Flg'd, Top / Side | F3 | Hybrid, Top / Side | X3 | |
| Flg'd, Top / Bottom | F4 | Hybrid, Top / Bottom | X4 | |
| Thrd'd, Side / Side | S1 | Refer to Page 3 | | |
| Thrd'd, Side / Bottom | S2 | | | |
| Thrd'd, Top / Side | S3 | | | |
| Thrd'd, Top / Bottom | S4 | | | |
| CHAMBER MATERIAL | | CODE | | |
| Carbon Steel | | - | | |
| Carbon Steel - NACE MR-01-75 | | N | | |
| 316 SST | | S | | |
| 316 SST - NACE MR-01-75 | | T | | |
| VESSEL CONNECTION SIZE | | CODE | | |
| 1" | | 10 | | |
| 1½" | | 15 | | |
| 2" | | 20 | | |
| VESSEL CONNECTION STYLE | | | CODE | |
| Butt-Weld - Sch. 40 | | | B4 | |
| Butt-Weld - Sch. 80 | | | B8 | |
| Butt-Weld - Sch. 160 | | | B1 | |
| Butt-Weld - Sch. XXH | | | BX | |
| Screwed Female (FNPT) | | | FS | |
| Raised Face Flange | | | RF | |
| Ring Type Joint | | | RJ | |
| CHAMBER RATING | | | CODE | |
| ANSI Class | Flanged Connections | Screwed Connections | | |
| ANSI 150 | V3 or V4 | -- | 1 | |
| ANSI 300 | V3 or V4 | -- | 3 | |
| ANSI 600 | V3 or V4 | V3 or V4 | 6 | |
| ANSI 900 | V4 only | -- | 9 | |
| ANSI 1500 | V4 only | -- | 5 | |
| ANSI 2500 | V4 only | V4 only | 2 | |
| STUD & GASKET MATERIAL | | | CODE | |
| Stud / Nut | Raised Face Gasket | Ring Joint Gasket | | |
| ASTM A194-2H | 316 SST / Grafoil C.S. Gr. | C.S. Solid | - | |
| ASTM A194-2H (NACE) | Inc. / Grafoil C.S. Gr. (NACE) | C.S. Solid (NACE) | N | |
| ASTM A194-SS8M | 316 SST / Grafoil 316 SST | 316 SST Solid | S | |
| ASTM A194-SS8M (NACE) | Inc. / Grafoil 316 SST (NACE) | 316 SST Solid (NACE) | T | |
| DISPLACER LENGTH | | | CODE | |
| 14" Long | | | 14 | |
| 32" Long | | | 32 | |
| Special | | | (length) | |
| VESSEL CONNECTION ORIENTATION | | CODE | VESSEL CONNECTION ORIENTATION | CODE |
| 0° with LLC @ 180° | | M000 | 45° with LLC @ 180° | M045 |
| 90° with LLC @ 180° | | M090 | 135° with LLC @ 180° | M135 |
| 180° with LLC @ 180° | | M180 | 225° with LLC @ 180° | M225 |
| 270° with LLC @ 180° | | M270 | 315° with LLC @ 180° | M315 |

While this information is presented in good faith and believed to be accurate, Mallard Control Company does not guarantee results based upon such information. Mallard Control Company reserves the right to change the design or specifications of these products without notice.

Mallard Control Company, Inc.

P.O. Box 7544
Beaumont, Texas, USA 77726-7544

Listed by www.ValveDepot.com