



Mallard

Model 3100E Liquid Level Switch

The Model 3100E (Figure 1) is an electric, float-operated switch which can be used as a high or low level alarm or for liquid level control. The 3100E is rated for high pressure applications, and the polystyrene float will effectively and consistently operate the switch at specific gravities as low as 0.50. The switch can be mounted directly onto the vessel nozzle or into an external float chamber (Figure 2).

Specifications

- Process Connections: 2" MNPT
- Operating Pressure (Max.): 1500 psig (103 Bar)
- Operating Temp.: -20 to 300°F (-29 to 200°C)
- Minimum Operating Specific Gravity: 0.50
- Minimum Operating Specific Gravity:
0.50 (Polystyrene Float)
0.68 (316 SST Float)
- Switch Rating: See Figure 3
- Leadwires: 18 AWG x 36" Long

Materials of Construction

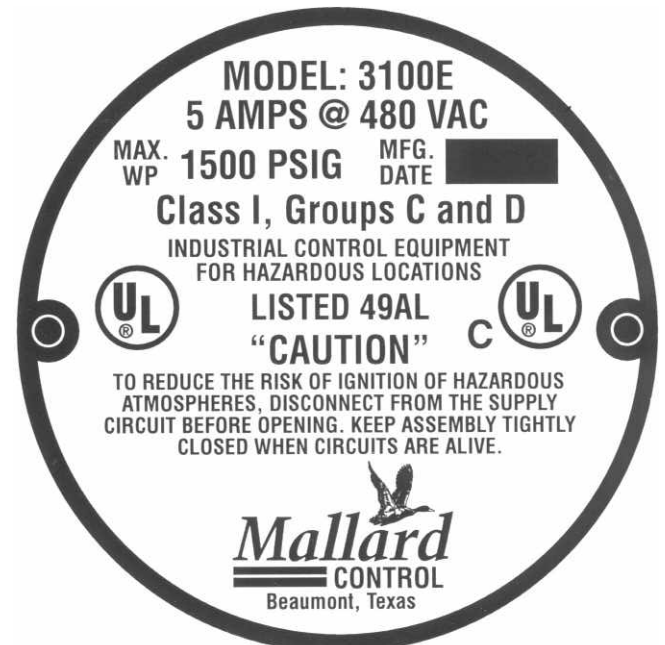
- Body: 1018 Carbon Steel / plated
316 SST (optional)
- Float: Polystyrene
316 SST (optional)
- Seals: Viton

Replacement Parts

31126	Polystyrene Float
31128	Optional SST Float
31060	Switch Assembly, SPDT
31062	Switch Assembly, DPDT



Figure 1. Model 3100E1 Level Switch



Standard Model	Description
3100E1	SPDT Switch – CS Body
3100E2	DPDT Switch – CS Body
3100E1-SS	SPDT Switch – 316 SST Body
3100E2-SS	DPDT Switch – 316 SST Body

Options	
Part Number	Description
31128	SST Float (0.68 SG min)
31124	External Float Chamber
31130	1" Float Extension

DIMENSIONS

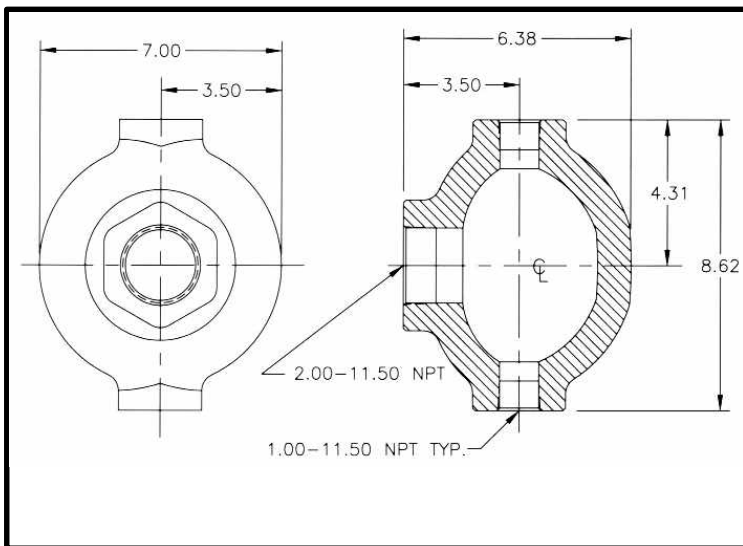
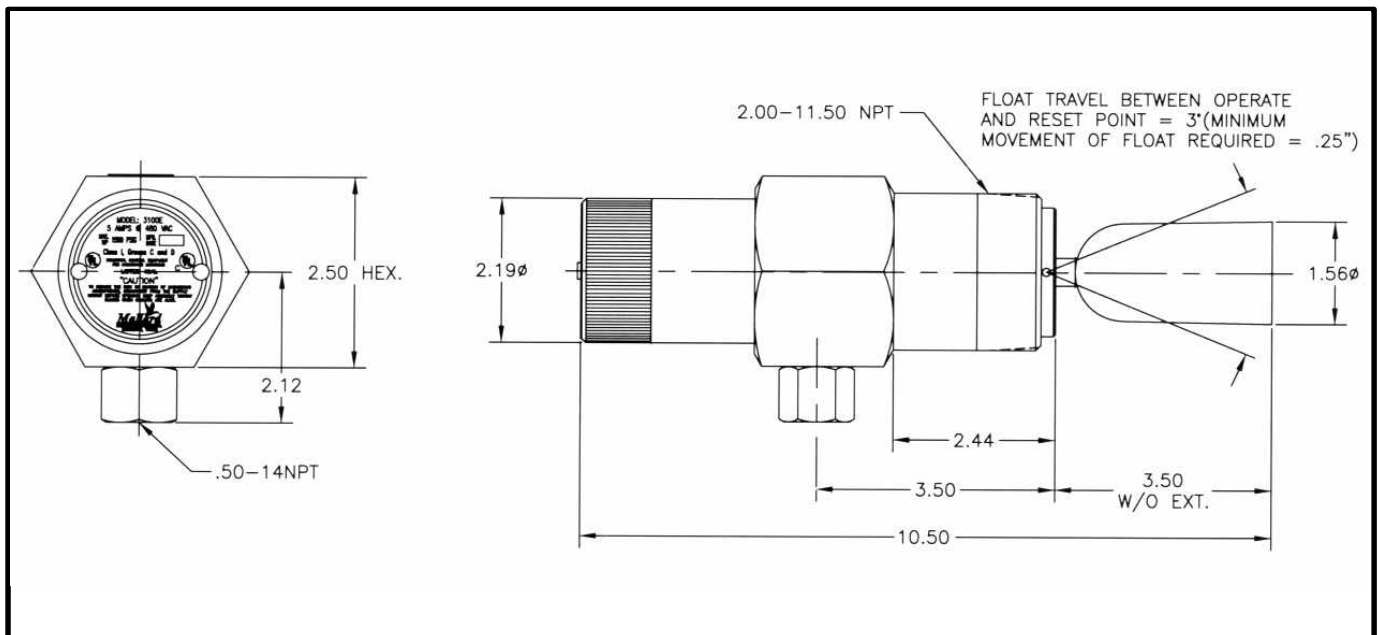


Figure 2. External Float Chamber

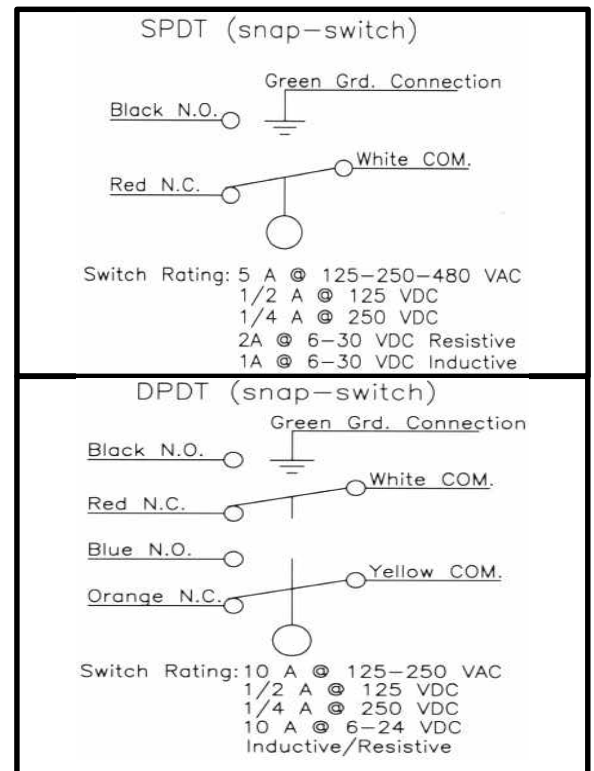


Figure 3. Switch Ratings and Wiring

While this information is presented in good faith and believed to be accurate, Mallard Control Company does not guarantee results based upon such information. Mallard Control Company reserves the right to change the design or specifications of these products without notice.

Mallard Control Company, Inc.

P.O. Box 7554

Beaumont, Texas, USA 77726-7554

Listed by www.ValveDepot.com